

CDX2 Rabbit mAb (AR1722)

Key Features

Host Species:	Rabbit
Reactivity:	Human, Mouse, Rat
Applications:	WB, IHC, IF, ELISA
Isotype:	IgG, Kappa
MW:	34kDa (Calculated) 38kDa (Observed)

Recommended Dilution Ratios

IHC:	1:500-2000
WB:	1:2000-10000
IF:	1:200-1000
ELISA:	1:5000-20000

Storage

-15°C to -25°C/1 year (Do not lower than -25°C)

Basic Information

Clonality	Monoclonal
-----------	------------

Immunogen Information

Specificity	Endogenous
-------------	------------

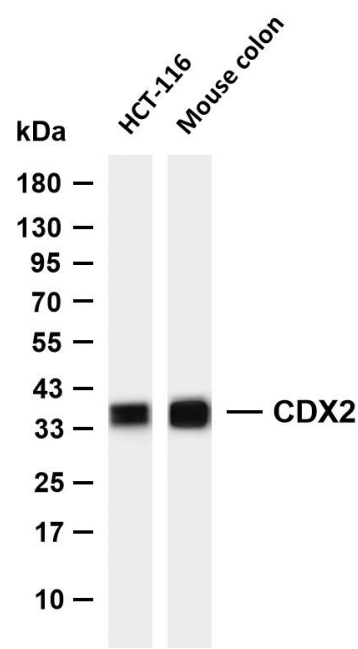
Target Information

Gene name	CDX2
Protein Name	Homeobox protein CDX-2

Organism	Gene ID	UniProt ID
Human	1045	Q99626
Mouse	12591	P43241

Cellular Localization	Nucleus.
Tissue specificity	Detected in small intestine, colon and pancreas.

Validation Data



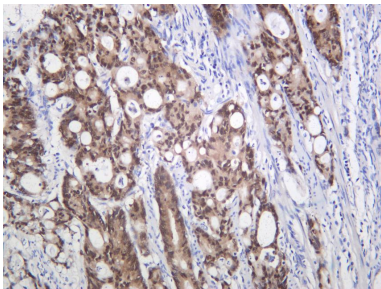
Various whole cell lysates were separated by 4-20% SDS-PAGE, and the membrane was blotted with anti-CDX2 antibody. The HRP conjugated Goat anti-Rabbit IgG (H + L) antibody was used to detect the antibody.

Lane 1: HCT-116

Lane 2: Mouse colon

Predicted band size: 34kDa

Observed band size: 38kDa



Human stomach adenocarcinoma was stained with anti-CDX2 Rabbit antibody.

For Research Use Only