

Musashi-1 Rabbit mAb (AR1721)

Key Features

Host Species:	Rabbit
Reactivity:	Human, Mouse, Rat
Applications:	WB, IHC, IF, IP, ELISA
Isotype:	IgG, Kappa
MW:	39kDa (Calculated) 39kDa (Observed)

Recommended Dilution Ratios

IHC:	1:100-400
WB:	1:2000-10000
IF:	1:200-1000
ELISA:	1:5000-20000
IP:	1:50-200

Storage

-15°C to -25°C/1 year (Do not lower than -25°C)

Basic Information

Clonality	Monoclonal
-----------	------------

Immunogen Information

Specificity	Endogenous
-------------	------------

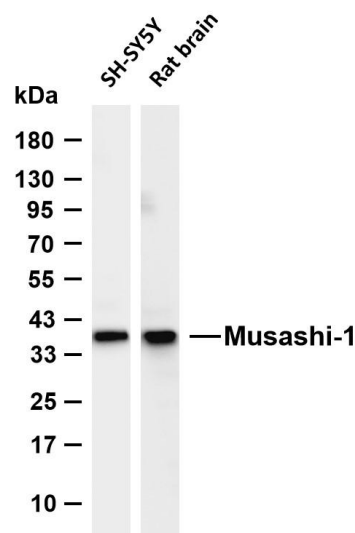
Target Information

Gene name	MSI1
Protein Name	RNA-binding protein Musashi homolog 1

Organism	Gene ID	UniProt ID
Human	4440	O43347
Mouse		Q61474

Cellular Localization	Cytoplasm. Nucleus.
Tissue specificity	Detected in fetal kidney, brain, liver and lung, and in adult brain and pancreas. Detected in hepatoma cell lines.

Validation Data



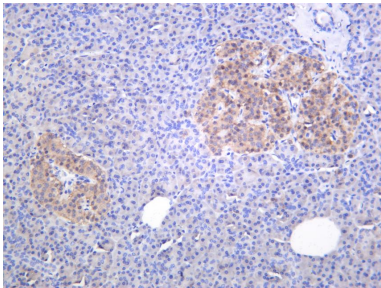
Various whole cell lysates were separated by 4-20% SDS-PAGE, and the membrane was blotted with anti-Musashi-1 antibody. The HRP conjugated Goat anti-Rabbit IgG (H + L) antibody was used to detect the antibody.

Lane 1: SH-SY5Y

Lane 2: Rat brain

Predicted band size: 39kDa

Observed band size: 39kDa



Human pancreas was stained with anti-Musashi-1 Rabbit antibody.

For Research Use Only