

PDX1 Rabbit mAb (AR1720)

Key Features

Host Species:	Rabbit
Reactivity:	Human, Mouse, Rat
Applications:	WB, IHC, IF, IP, ELISA
Isotype:	IgG, Kappa
MW:	31kDa (Calculated) 42kDa (Observed)

Recommended Dilution Ratios

IHC:	1:100-500
WB:	1:5000-20000
IF:	1:200-1000
ELISA:	1:5000-20000
IP:	1:50-200

Storage

-15°C to -25°C/1 year (Do not lower than -25°C)

Basic Information

Clonality	Monoclonal
-----------	------------

Immunogen Information

Specificity	Endogenous
-------------	------------

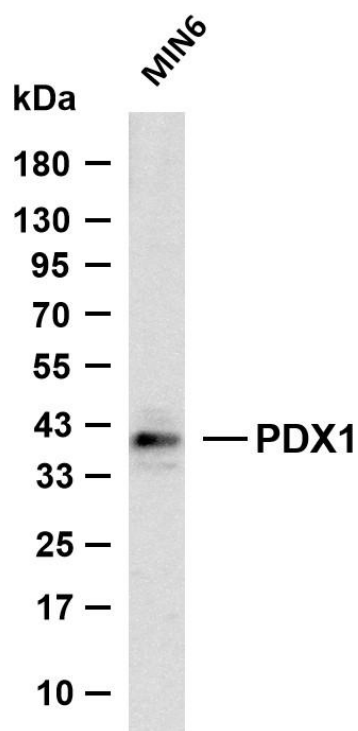
Target Information

Gene name	PDX1
Protein Name	Pancreas/duodenum homeobox protein 1

Organism	Gene ID	UniProt ID
Human	3651	P52945
Mouse	18609	P52946
Rat	29535	P52947

Cellular Localization	Nucleus. Cytoplasm, cytosol
Tissue specificity	Duodenum and pancreas (Langerhans islet beta cells and small subsets of endocrine non-beta-cells, at low levels in acinar cells).

Validation Data

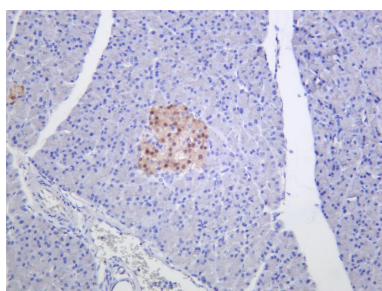


Various whole cell lysates were separated by 4-20% SDS-PAGE, and the membrane was blotted with anti-PDX1 antibody. The HRP conjugated Goat anti-Rabbit IgG (H + L) antibody was used to detect the antibody.

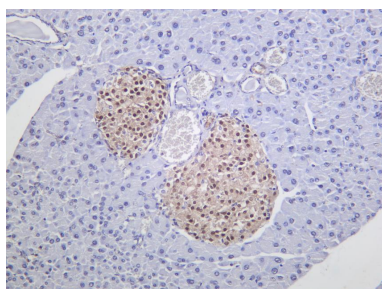
Lane 1: MIN6

Predicted band size: 31kDa

Observed band size: 42kDa



Rat pancreas was stained with anti-PDX1 Rabbit antibody.



Mouse pancreas was stained with anti-PDX1 Rabbit antibody.

